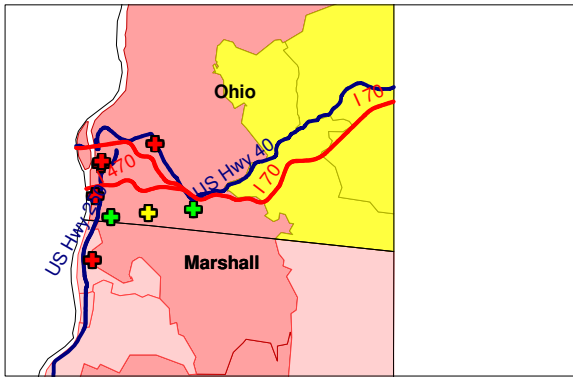
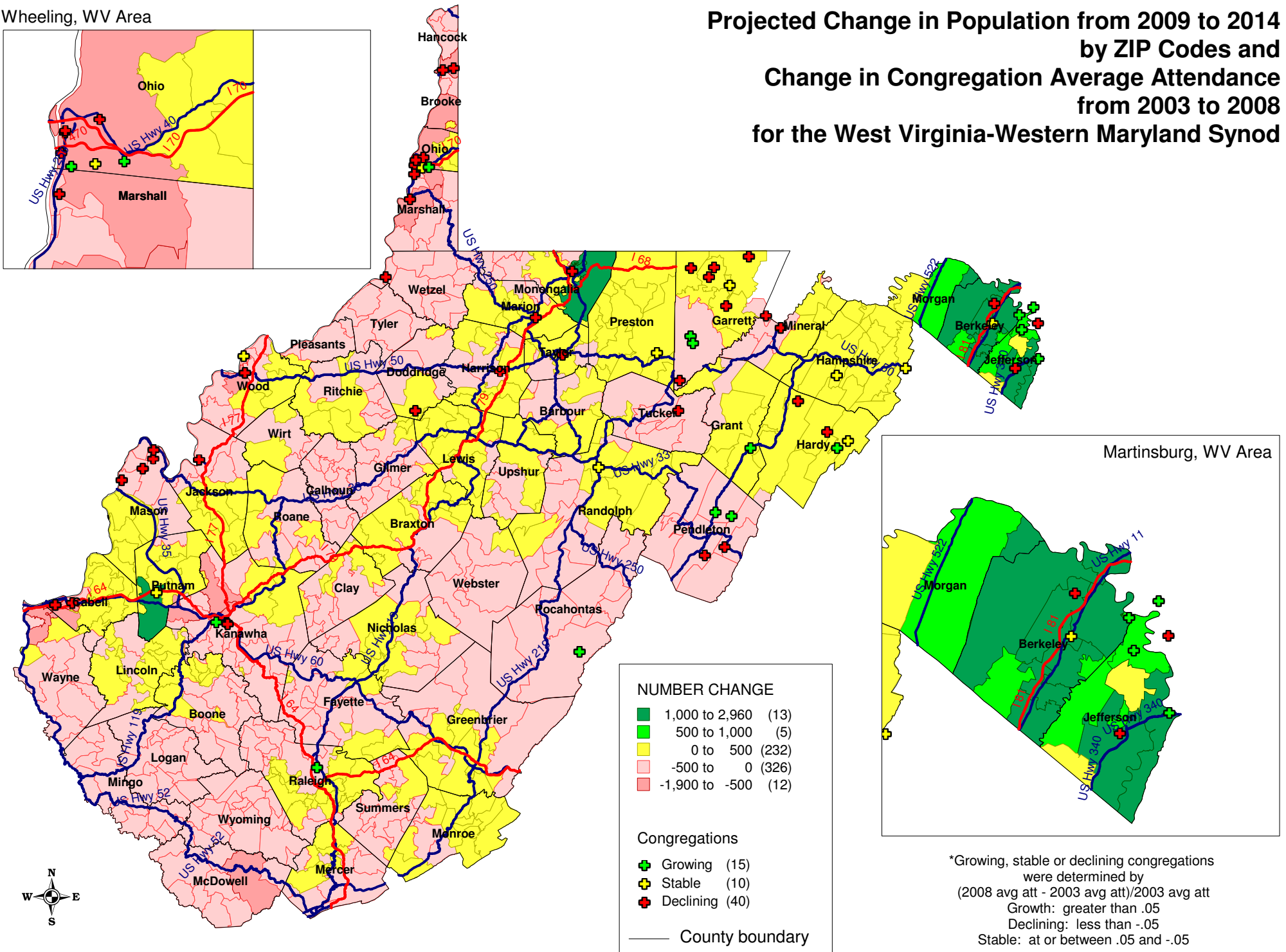


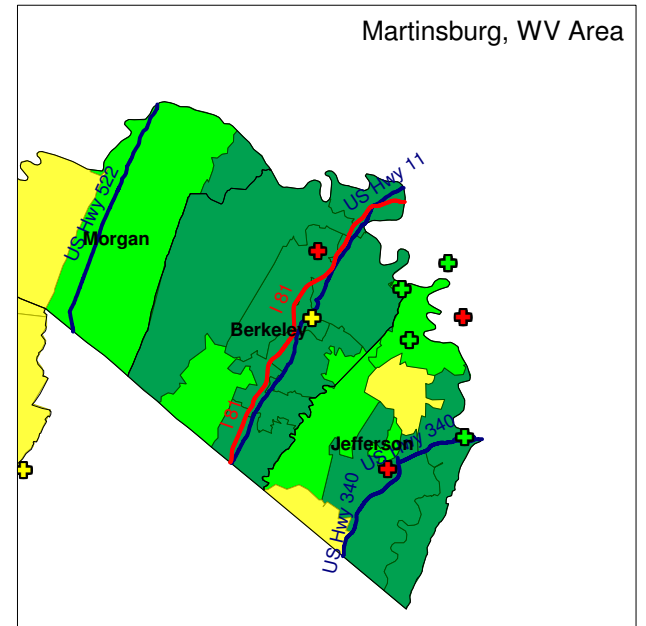
Wheeling, WV Area



Projected Change in Population from 2009 to 2014 by ZIP Codes and Change in Congregation Average Attendance from 2003 to 2008 for the West Virginia-Western Maryland Synod



Martinsburg, WV Area



NUMBER CHANGE

- 1,000 to 2,960 (13)
- 500 to 1,000 (5)
- 0 to 500 (232)
- 500 to 0 (326)
- 1,900 to -500 (12)

Congregations

- Growing (15)
- Stable (10)
- Declining (40)

— County boundary

*Growing, stable or declining congregations were determined by $(2008 \text{ avg att} - 2003 \text{ avg att}) / 2003 \text{ avg att}$
 Growth: greater than .05
 Declining: less than -.05
 Stable: at or between .05 and -.05

